

Survey Methods

- Items based on BAR, prior surveys, AASIG feedback
- Survey reviewed by two PT program directors
- E-mail request to all accredited programs
- To participate in a web-based survey (Survey Suite)

Caveats

- Failed address rate higher than last year
- Many had difficulty with web link
- Surveyor made errors in dates of interest in request, which were corrected, but.....
- Response rates lower than last year

Results

- PTA

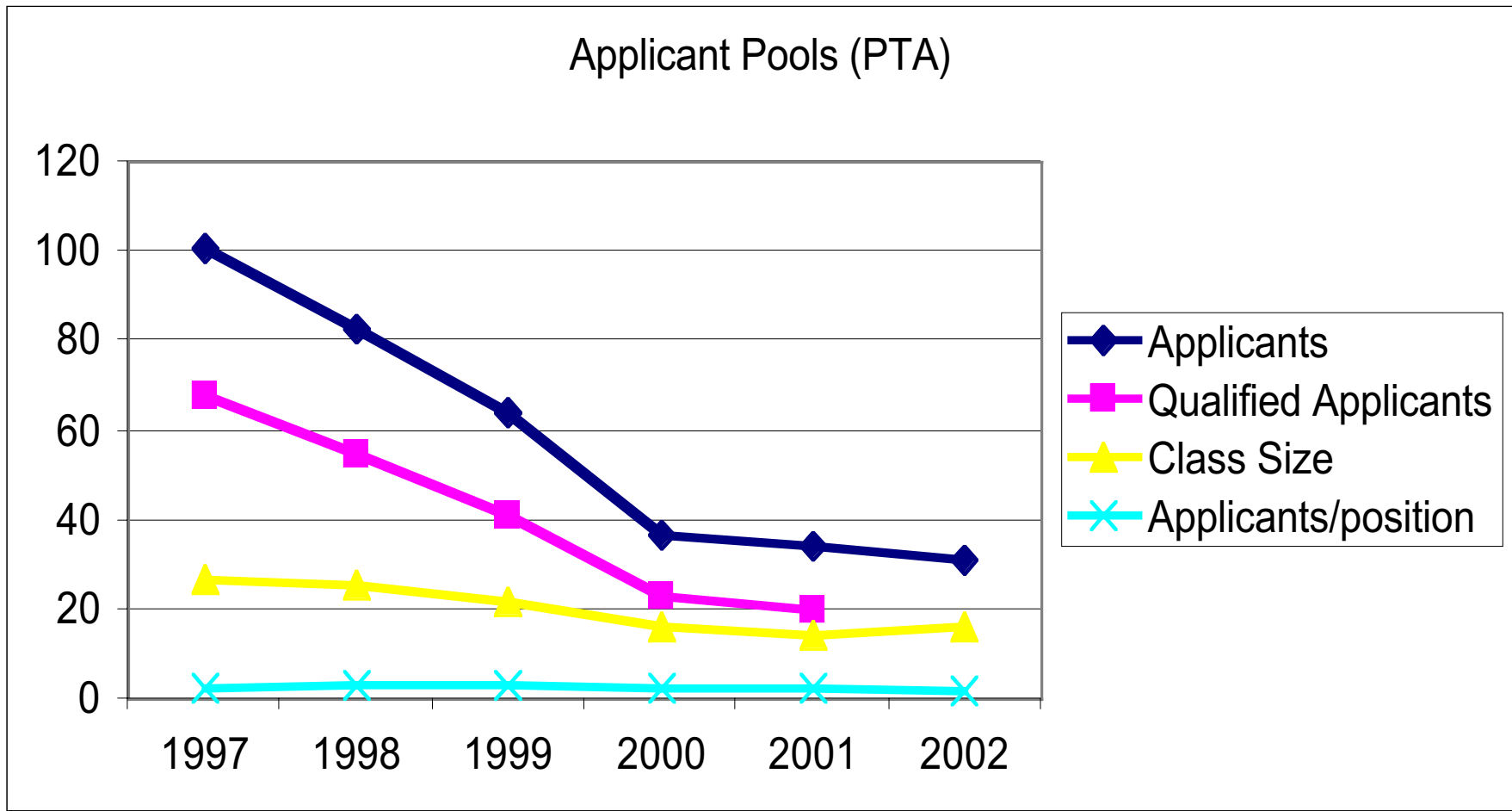
- » 257 institutions queried (47 failed e-mail addresses)
- » 75 programs responded
- » 36% response rate

- PT

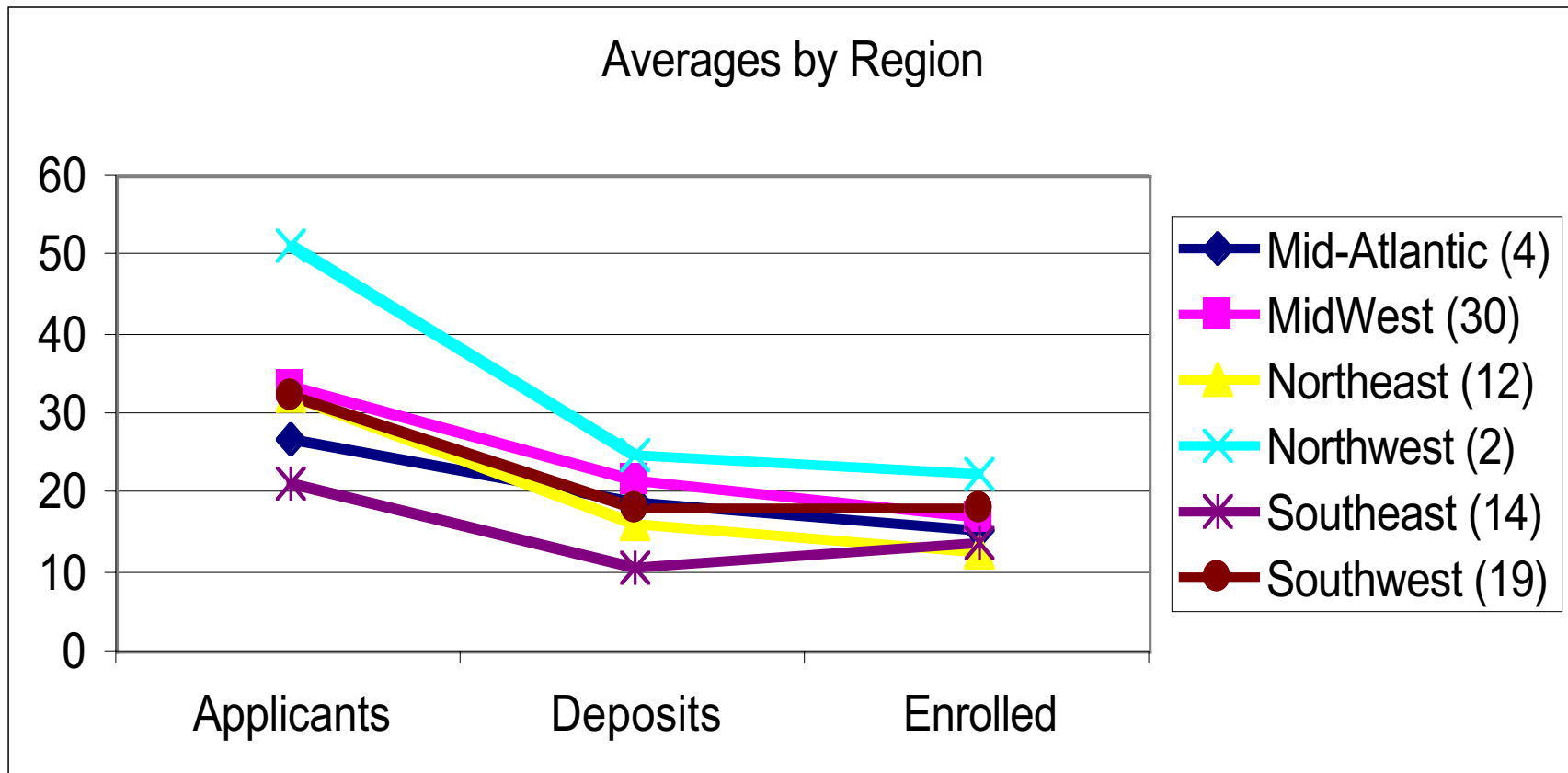
- » 198 institutions queried (16 failed e-mail addresses)
- » 85 programs responded
- » 47% response rate

Physical Therapist Assistant Educational Programs

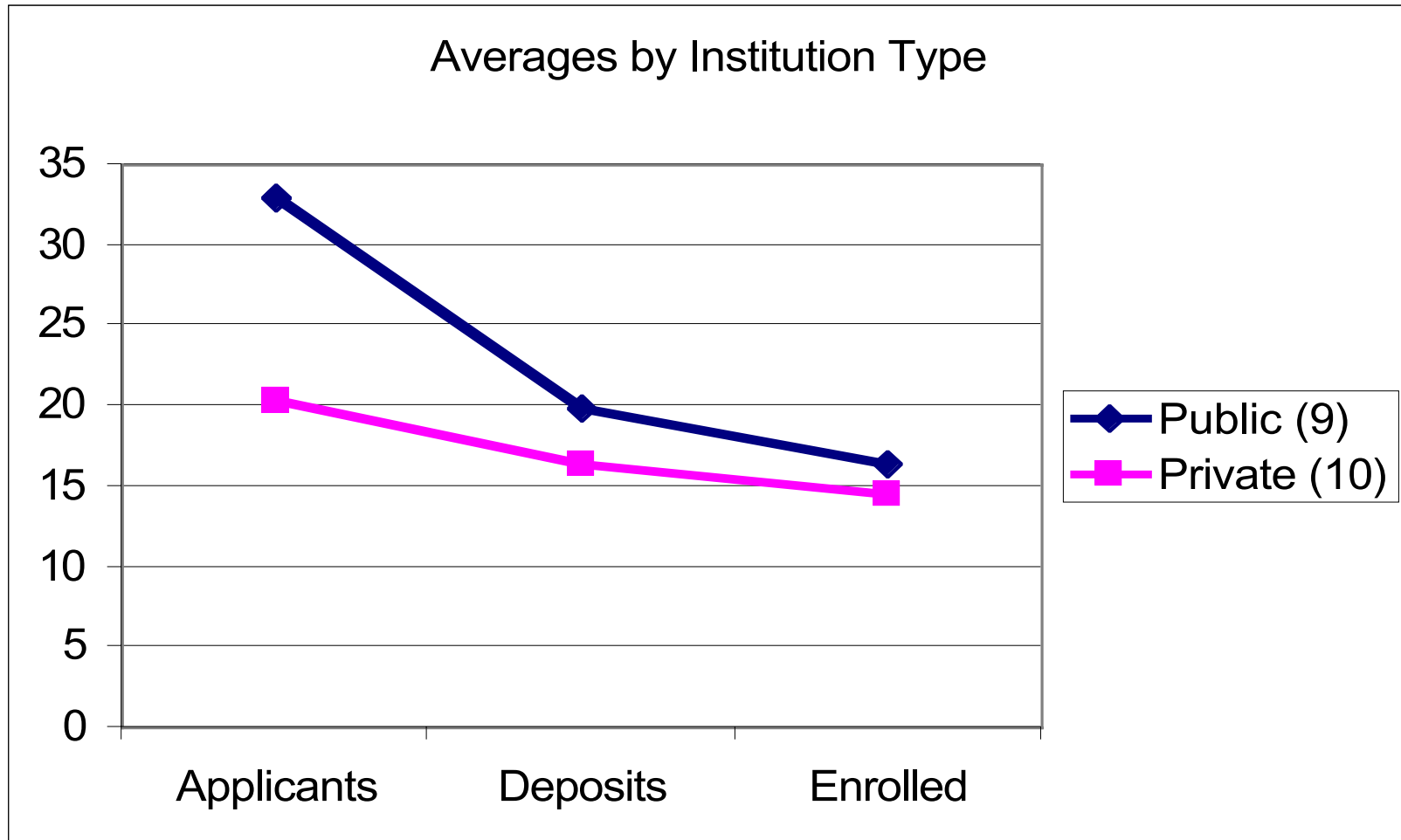
PTA - Applicant Pool Changes



PTA - Applicant Pools by Region



PTA - Applicant Pools by Institution Type

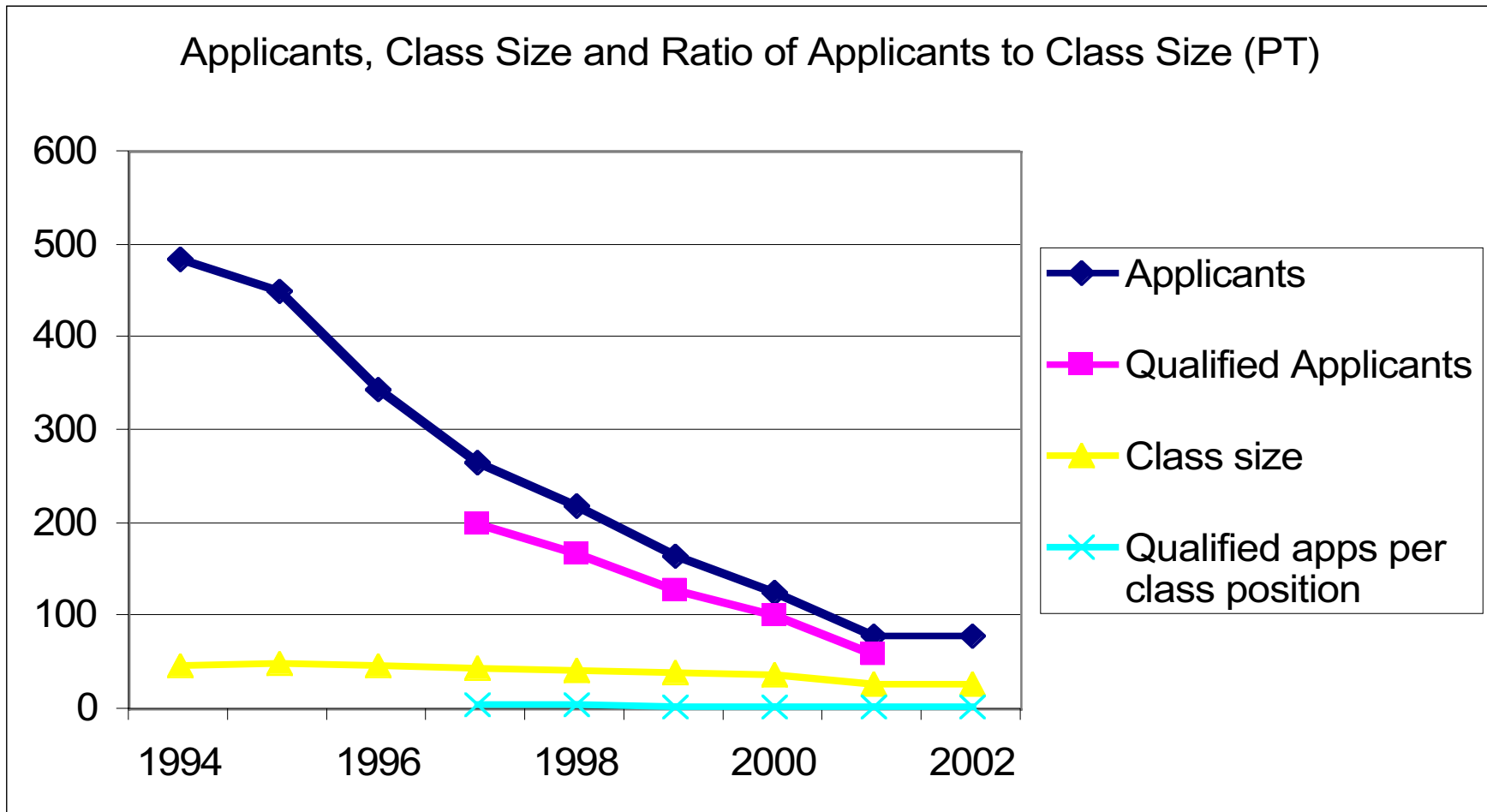


PTA -

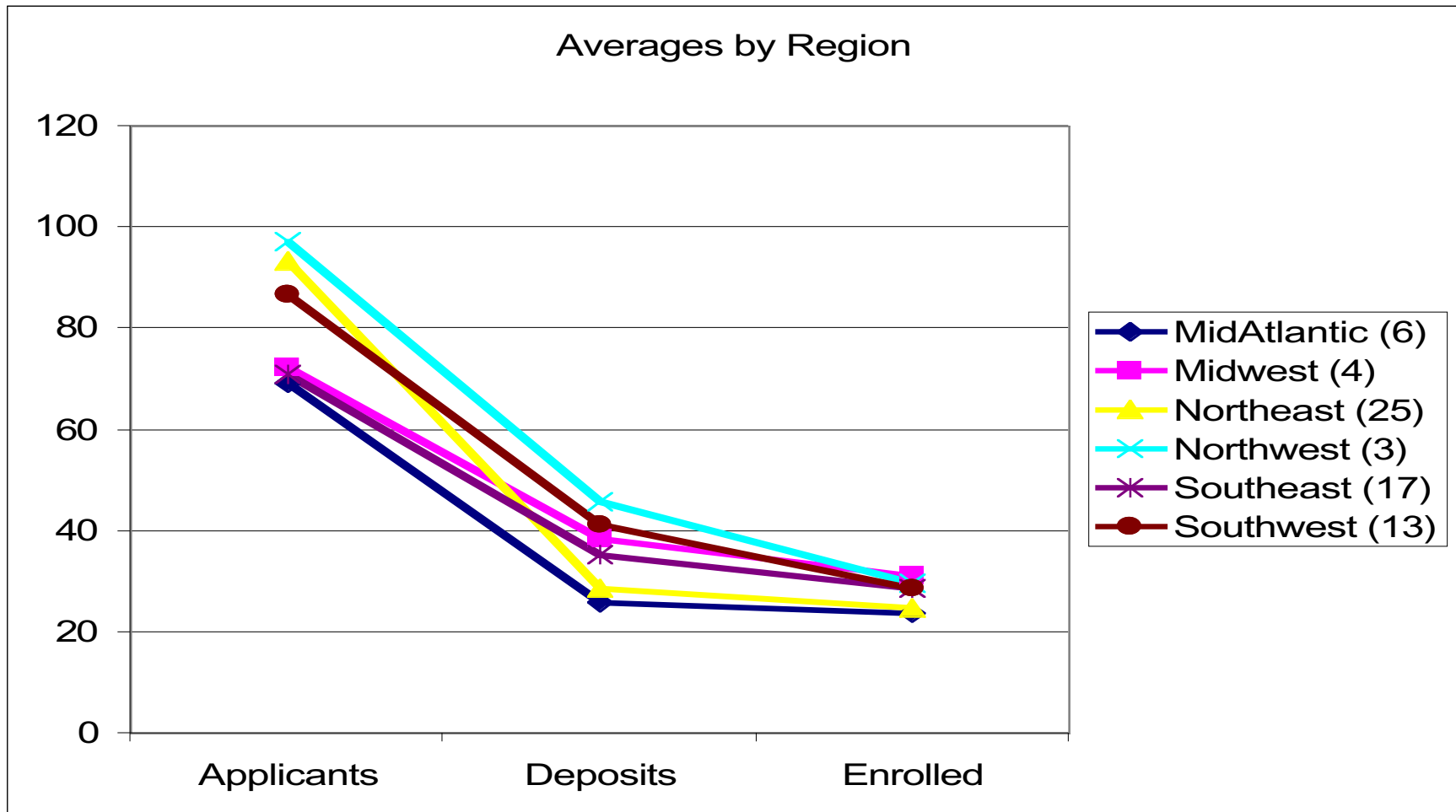
- **Admissions Deadlines**
 - » Admissions Cycle
 - Open -27 Specific month - 49
 - » Did you extend this deadline for 2001 admissions?
 - Yes - 36 No -38
- **Did you change any criteria for this admissions cycle?**
 - » Yes -16 No - 53
 - Lessened 12
 - Increased 4
- **Generally, how does the quality of these applicants compare with the last two years?**
 - » Similar - 36 Better - 24 Not as strong -14
- **Has there been an impact on your program due to decreased class size?**
 - » Budget cuts - 10
 - » Reduced number of faculty - 11

Physical Therapist Educational Programs

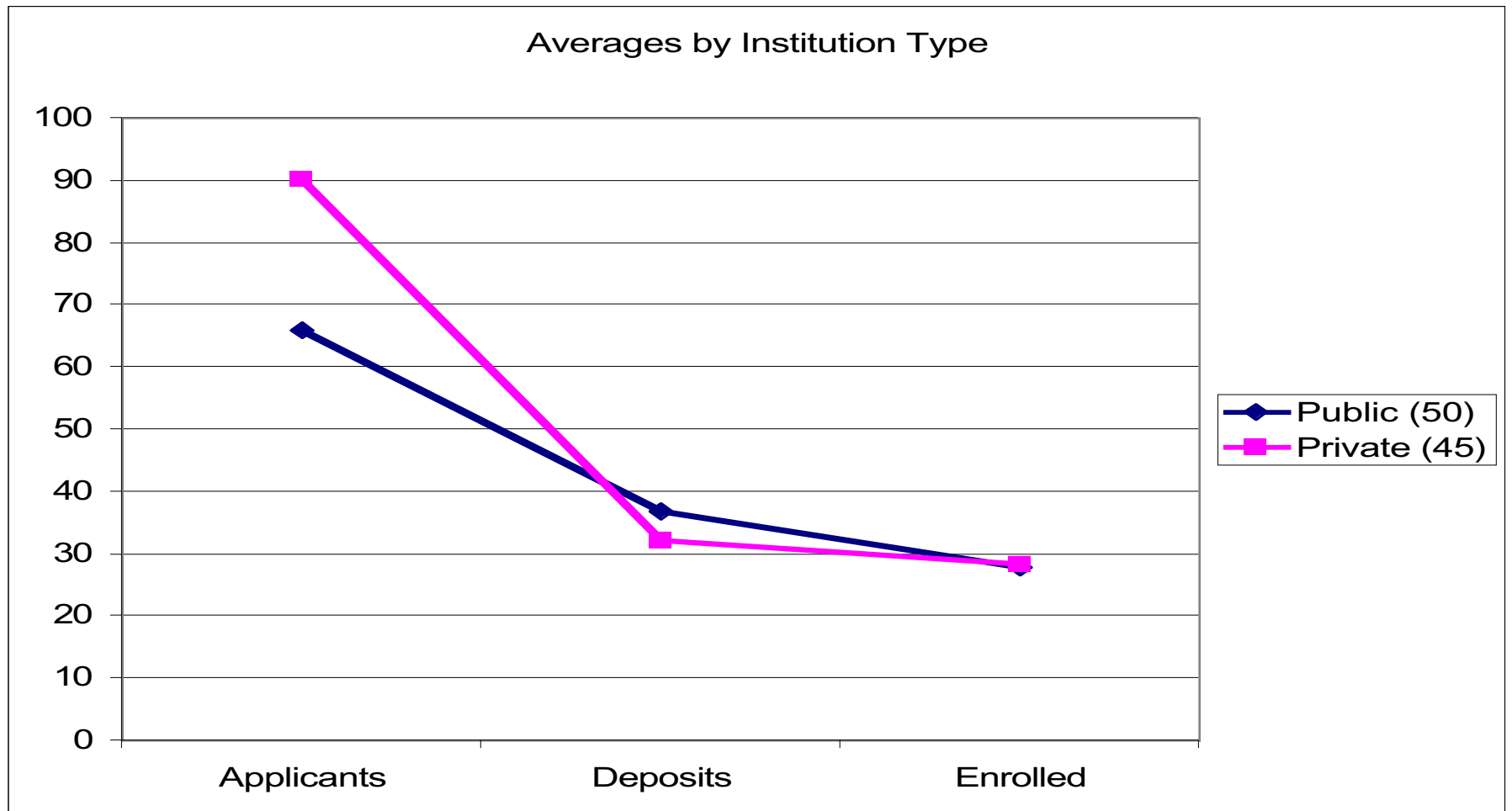
PT - Applicant Pool Changes



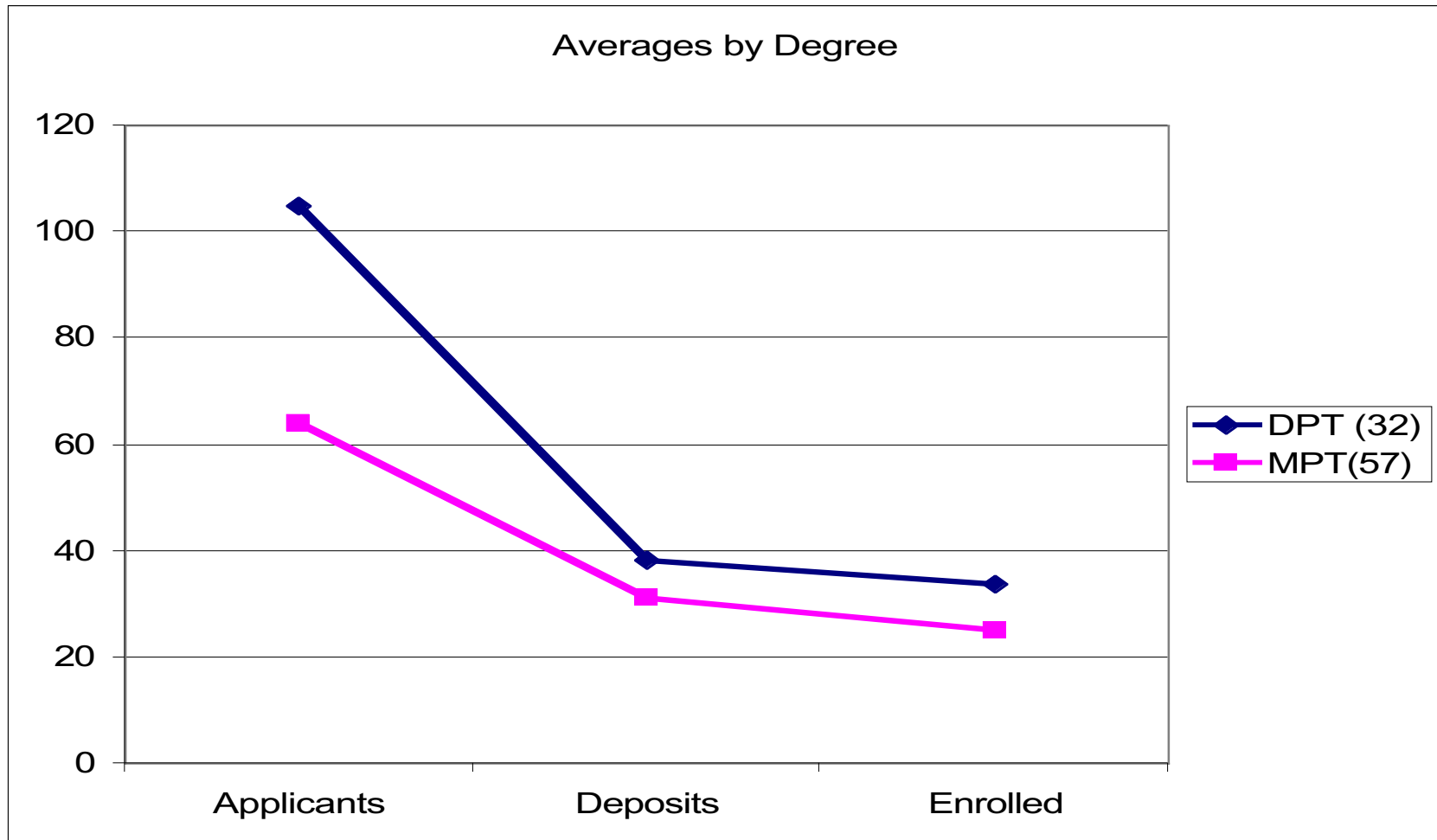
PT - Applicant Pools by Region



PT - Applicant Pools by Institution Type



PT - Applicant Pools by Degree Granted



PT

- **Admissions Deadlines**
 - » Admissions Cycle
 - Open - 19 Specific month - 64
 - » Did you extend this deadline for 2001 admissions?
 - Yes - 45 No - 37
- **Did you change any criteria for this admissions cycle?**
 - » Yes - 15
 - Lessened them - 10 Increased them - 1
 - » No - 67
- **Generally, how does the quality of these applicants compare with the last two years?**
 - » Similar - 41 Better - 24 Not as strong - 17
- **Has there been an impact on your program due to decreased class size?**
 - » Budget cuts - 16
 - » Reduced number of faculty - 5
 - » New program development - 16

Thanks

- Leslie Portney, PT, PhD
- CAPTE staff
- Department of Education, APTA
- Survey Suite
- All participants